

**LEGEND**

R.E. RIM ELEVATION  
G.E. GRATE ELEVATION  
I.E. INVERT ELEVATION

DOUBLE WATER METER SERVICE  
SINGLE WATER METER SERVICE  
C.O.T.G. CLEAN OUT TO GRADE  
PAVEMENT RESTORATION  
MILL & RESURFACE PAVEMENT WITH 1.5" SP-9.5 AFTER PAVEMENT RESTORATION FOR PAVEMENT CUTS  
DOUBLE SEWER LATERAL  
SINGLE SEWER LATERAL  
EXISTING OR FUTURE UTILITIES

**NOTE:**  
ANY EXISTING WATER AND/OR SEWER CONNECTION TO THE SUBJECT LOTS NOT UTILIZED MUST BE CUT AND CAPPED AT THE WATER MAIN IF A WATER SERVICE AND CUT OUT AND SLEEVED IF A SEWER LATERAL. SEWER LATERALS THAT ARE CUT AND CAPPED WILL NEED TO BE AS-BUILT PER OUR ENGINEERING AS-BUILT STANDARDS. HOW TO RETIRE OLD LATERALS IF THE EXISTING MAIN IS CLAY PIPE AND HAS A CIPP LINER CURRENTLY INSTALLED. (INSTALL A SECTIONAL LINER IN THE MAIN OVER THE OLD LATERAL THUS ELIMINATING THE LATERAL) IF THE EXISTING MAIN IS CLAY PIPE, (DIG DOWN CUT OLD CLAY PIPE, SLEEVE BACK IN WITH PVC AND CITY APPROVED COUPLINGS) IF THE EXISTING MAIN IS CLAY PIPE AND YOU ARE REQUIRED TO RETIRE MULTIPLE LATERALS FOR A PROJECT, (IT MAY BE CHEAPER FOR THE CONTRACTOR TO INSTALL A CITY APPROVED CIPP LINER FROM MANHOLE TO MANHOLE AND NOT CUT OUT THE LATERALS THAT THEY ARE RETIRING) IF THE EXISTING MAIN IS PVC PIPE, (REMOVE THE LATERAL PIPE FROM THE PVC WYE FITTING AND INSTALL A PLUG INTO THE WYE. INSTALL A GREEN LOCATING MARKING BALL AT THE LATERAL LOCATING, NO DEEPER THAN 4 FT. BELOW GRADE)

PROJECT NAME: REGANZANI WAREHOUSE POMPANO BEACH

WATER AND SEWER DEMAND CALCULATIONS

Date: 2/17/2025

The estimated flows were calculated using the Broward County WWS ERU Factors  
Equivalent Residential Unit Factors (ERU) for Warehouses (mixed use)  
Warehouse (mixed use): 250 GPD per Unit (Ref. Code C06)

ERU PER UNIT OF WAREHOUSE (MIXED USE): 1000SF = 0.168  
GROSS AREA OF BLDG. = 7,181 SF

Total ERU = 7.2 X 0.168 = 1.210

	Demand	Units	Total	
1.21 ERU	250	GPD	302.5	
Total Average Daily Flow			302.5	GPD

Total Average Flow Per Hour 302.50 /24 Hrs. = 12.60 GPH

Max. Flow Per Hour = 12.60 x 4.0 = 50.42 GPH

AAC

PZ23-12000055

08/19/2025

REVISIONS:

1.	
2.	
3.	
4.	
5.	
6.	
7.	
8.	

CLIENT:

LLR ARCHITECTS, INC.  
9000 SHERIDAN STREET  
SUITE 158  
PEMRBOKE PINES, FL, 33024

PROJECT:

SW 3RD STREET  
POMPANO BEACH  
FLORIDA  
TASK:  
WATER AND SEWER PLAN

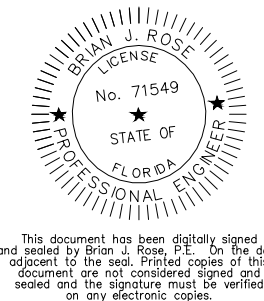


CIVIL AND FORENSIC ENGINEERS • LAND PLANNERS  
• CONSTRUCTION MANAGERS  
FLORIDA REGISTRATION No. 38256

2699 Stirling Road, Suite C-202  
Fort Lauderdale, Florida 33312  
Phone: (954) 986-9899

DATE: FEB, 2025	SCALE: 1"=20'
DESIGNED BY: B.J.R.	DRAWN BY: A.R.

PROJECT NO.  
25-0349  
SHEET  
C-003.1



This document has been digitally signed and sealed by Alicia R. Reganzani, P.E. No. 71549, State of Florida. The digital signature is located on the back of this document and the corresponding physical signature is on the back of this document.